



AX Series

REMOTE GRAPHICAL LCD ANNUNCIATORS



Unique Features:

- ANSI/UL 864 9th Edition Listed
- Advanced User Interface w/Graphical LCD
- Vector Reporting of Events
- Full System Control or Annunciation Only
- Dedicated System & Navigation Keys
- AD-NeT-PluS Peer-to-Peer Networked

Description:

Providing superior flexibility and customization to an AX Series Intelligent Fire Alarm Control Panel installation, the AX Series Remote Graphical LCD Annunciators are available in two (2) models, the AX-ANN-C and AX-ANN-D. The AX-ANN-C provides annunciation and programmable peer-to-peer system controls while the AX-ANN-D provides annunciation only. As an alternative to password access, both the AX-ANN-C and AX-ANN-D units are capable of incorporating an optional access enable keyswitch (p/n: AX-KSW), thereby restricting access to the Acknowledge, Reset Silence, Resound and Drill functions without first activating the keyswitch. Designed to adapt to any installation the graphical annunciators are compact and attractive.

Both units incorporate Advanced Fire Systems industry unique backlit 240 x 64 graphical LCD display. The graphical LCD display allows adaptation to virtually any language and character set. In addition to the programmable language capabilities, the graphical LCD display allows users/customers to customize the display with installation/company logo and details which will be displayed during normal system mode.

The level of information displayed and the control capabilities of each AX-ANN-C and AX-ANN-D remote annunciator is fully field programmable. Individual units can be configured to vector information and control, allowing remote annunciators to be dedicated to alarms, troubles, supervisories or other status events.

The AX-ANN-C and AX-ANN-D communicate over Advanced Fire Systems AD-NeT-PluS fault tolerant, Style 4 or 7, peer-to-peer network. This is a true peer-to-peer network with full cross node reporting.

The AX-ANN-C and AX-ANN-D are comprised of three (3) parts; the back box, cover, chassis assembly. They can be mounted surface or semi-flush (w/optional trim-ring). In addition, a tamperproof box p/n: AX-ANN-TP and a weatherproof box p/n: AX-ANN-WP are available.



3118002NYM-001B

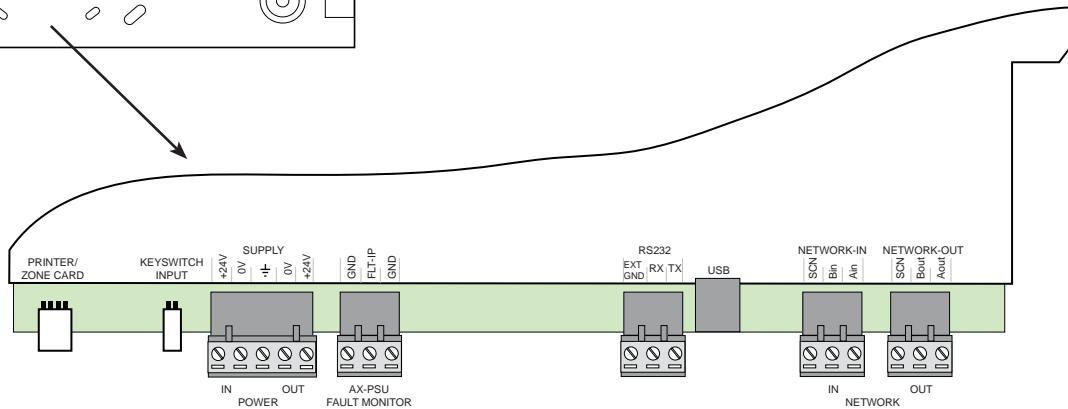
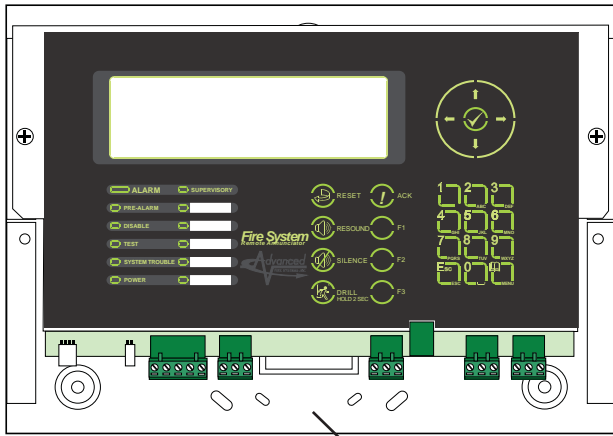


7165-1713:100

Features:

- Compact, Attractive Appearance
- Backlit 240 x 64 Graphical LCD Display
- Style 4 or 7 Network Communications
- Multiple Language Adaptability
- Optional Access Enable Key-Switch
- 5000ft Maximum Cable Length
- Supervised External Trouble Input
- Integral RS232 Printer Port

Product Data Sheet



AX Series Remote Graphical LCD Annunciators Specification Details

Display	Backlit, 240 x 64 Graphical LCD
Input Voltage (DC)	24 VDC (operating range 15-30 VDC)
Standby Current	78 mA (backlight off)
Operating Current	140 mA (in alarm)
LED Indicators	Red - Alarm, Green - Power, 10 Yellow - Trouble, Supervisory & System Status Indicators
Keypad	Alphanumeric Keypad, Navigation Keys & On-Board Buzzer
Controls (AX-ANN-C only)	Acknowledge, Reset, Silence, Resound & Drill
External Monitoring Input	Supervised Closed Contact
Serial Port	RS232
Enclosure	Steel, Four ½" Knockouts, Rear Entry Double Gang Electrical Box Mount
Color	Red RAL3002 (textured)
Dimensions	8½" H x 11¾" W x 1¾" D
Weight	4.5 lbs

Ordering Information

AX-ANN-C	Remote Graphical LCD Annunciator w/Control (Style 4)
AX-ANN-C/ST7	Remote Graphical LCD Annunciator w/Control (Style 7)
AX-ANN-D	Remote Graphical LCD Annunciator w/o Control (Style 4)
AX-ANN-D/ST7	Remote Graphical LCD Annunciator w/o Control (Style 7)
options:	
AX-KSW	Optional Access Enable Keyswitch
AXM-008	Trim-Ring for Semi-Flush Mounting
AX-ANN-TP	Tamperproof Enclosure
AX-ANN-WP	Weatherproof Enclosure (comes with 24V heater)



100 South Street, Hopkinton, Massachusetts, USA MA 01748
 Tel: 1.508.453.9995 ■ Fax: 1.508.453.9996 ■ www.afsi.us.com