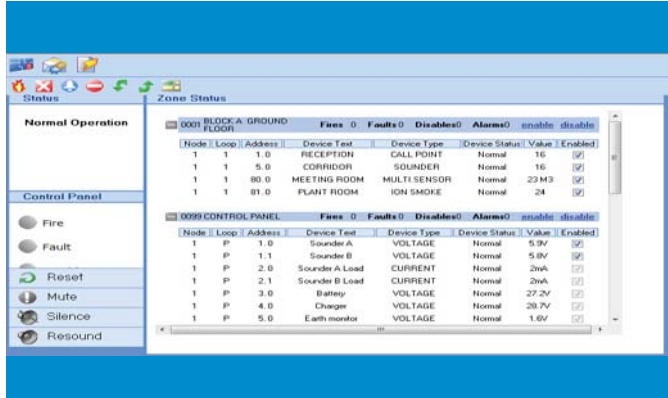




AX Series

INTELLIGENT ipGATEWAY



Unique Features:

- Monitoring & Interrogation via the Internet
- Secured Internet Connection
- AD-NeT-Plus Network
- Password Protected
- Event Notification via Email
- Configurable via the Internet

Description:

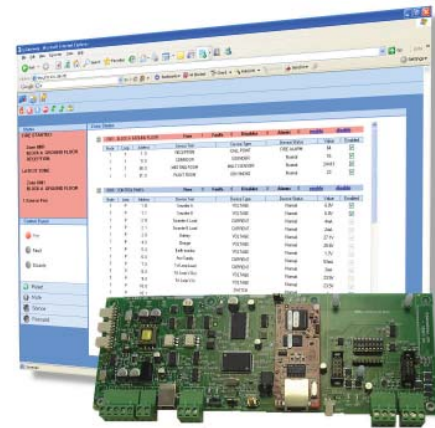
Providing superior remote monitoring and diagnostic interrogation from any remote location, via a secured internet connection, the Advanced Fire Systems Intelligent ipGateway provides an internet gateway to a single **AX Series** Intelligent Fire Alarm Control Panel or to a complete **AX Series** peer-to-peer network (*AD-NeT-Plus*) installation.

The ipGateway consists of the ipGateway PCB, enclosure, and integral display software. It consumes one node address on an *AD-NeT-Plus* network, and can be utilized on either the Advanced Fire Systems Style 4 or Style 7 fault tolerant peer-to-peer network.

The Intelligent ipGateway gathers real-time information from a standard web browser giving visual and audible indication of the status of all *AD-NeT-Plus* connected nodes. The state of each network node and the status of individual devices (such as analog values of intelligent smoke detectors) of an *AD-NeT-Plus* network can be displayed at any time in a user-friendly clear and concise manner. Installation event logs can be viewed, saved, or printed as needed without the need to be physically at the installation site.

In addition to providing real-time remote access to Advanced Fire Systems **AX Series** networks, the ipGateway can be configured to provide email notification based on various system/installation status changes. Status events such as alarms, pre-alarms, troubles, disables, etc. can be sent via email to various designated email accounts based on time-of-day and day-of-week settings. Specific custom user text messages can be configured for any email, providing precise and accurate information immediately to critical personnel.

With unique password protected access, granted by authorized on-site building maintenance personnel or a service technician, remote external commands can be generated over the TCP/IP network. This feature allows the remote user to assist local personnel in maintenance and troubleshooting of virtually any issue related to an **AX Series** installation. This remote access and control incorporates a safety time-limiting feature, to avoid prolonged access without approval.

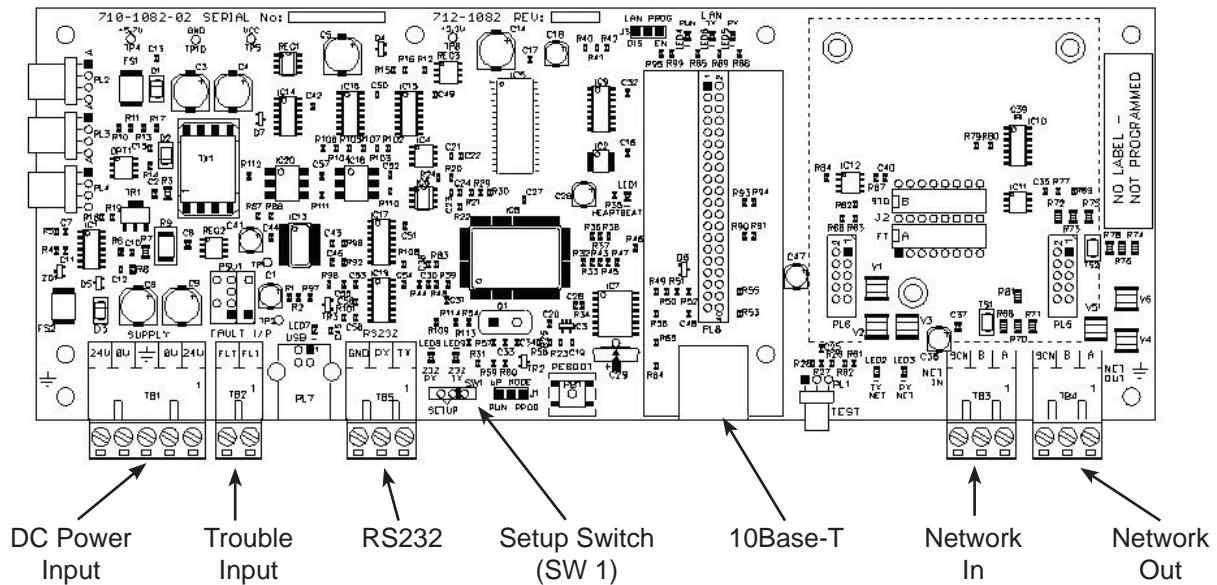


Features:

- Style 4 or 7 Network Communications
- Remote access to *AD-NeT-Plus* Network
- Auto Learn Feature
- Multiple User Access Permissions
- Uncomplicated and Simplistic Installation
- Utilizes Standard Web Browser
- ANSI/UL 864 Listed Pending

Product Data Sheet

ipGateway Wiring



AX Series ipGateway Specification Details

Operating Voltage	18 - 28 VDC
Operating Current (AX-NET4 & 7) Mxp-054 (Style 4 network) Mxp-054/FT (Style 7 network)	70 mA 110 mA
Environment	Indoor, Dry
Operating Temperature	32-120° F (0-48° C)
Humidity	10-95% (non-condensing)
Enclosure Dimensions Knockouts	8 3/8" H x 11 3/4" W x 1 5/8" D 4 top, 4 bottom rear
Weight (PCB & enclosure)	4.5 lb
Wiring	Twisted pair 18 - 20 AWG minimum Recommended Twisted Shielded (Belden 8760, 8762)
Serial Interface	Isolated RS-232
Fault Input	Remote Power Supply Monitoring Input
Ethernet Interface	10Base-T, RJ45
Indications	Microprocessor Heartbeat Network Transmit/Receive LAN Activity LAN Connectivity LAN Run

Ordering Information

Mxp-054	ipGateway Style 4 w/enclosure
Mxp-054/FT	ipGateway Style 7 w/enclosure
Mxp-054/B	ipGateway PCB
712-1049	Replacement - Style 7 Module



100 South Street, Hopkinton, Massachusetts, USA MA 01748
Tel: 1.508.453.9995 ■ Fax: 1.508.453.9996 ■ www.afsi.us.com